



HEATH CITY SCHOOLS



Community Meeting
August 29, 2018

FANNING HOWEY

Thank You for coming!

Goals

- Understand existing facility conditions
- Understand needs
- Student success
- Roadmap for improved facilities
- We need your input



Timeline

Today

- **August 29, 2018 : Kick-off and Overview**

Future meeting dates:

- September 12, 2018
- October 10, 2018
- November 7, 2018
- November 28, 2018

Consensus by December 2018/January 2019

Targeting potential for a May 2019 bond issue



Community Engagement

Facility Planning Committee (6:00 – 7:15pm)

- Review of current facilities
- Focus on facility needs
- Best long-term Master Plan

Finance Committee (7:30 – 8:45pm)

- Project costs
- Financing options
- Locally Funded Initiatives (LFI's)



History

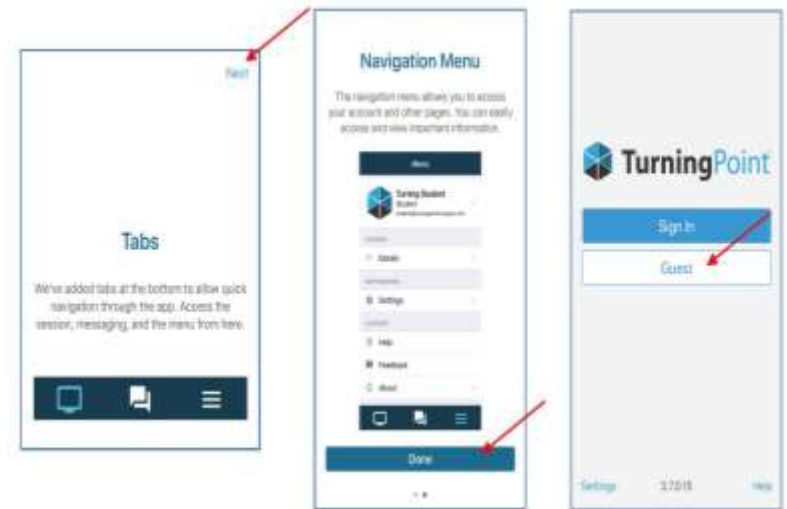
- Prior to 2017, Heath was not eligible for an OFCC Master Plan Project
- August 2017 : OFCC meeting
- December 2017 : Heath intent to enter active OFCC planning process
- February 2018 : OFCC meeting to review potential master plan options
- 2018 school year : OFCC will be updating project costs and enrollment projections



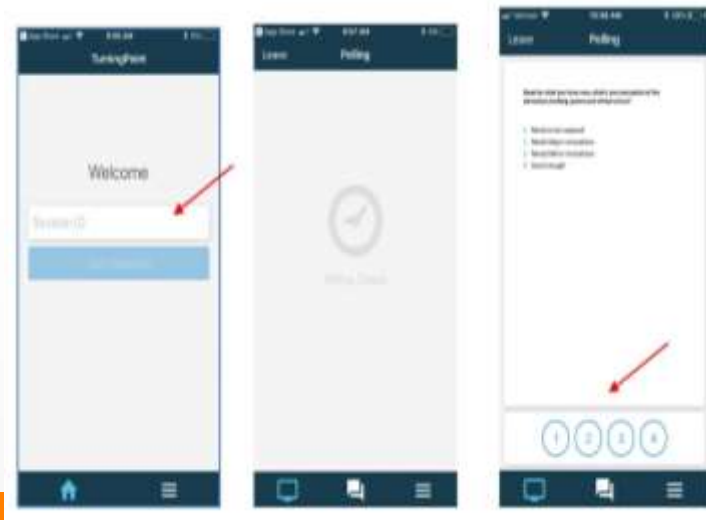
Responding with Your Phone

1. Download and open app:
Turning Point Responseware

2. Click NEXT, DONE, GUEST



3. Enter session ID:
Heath1

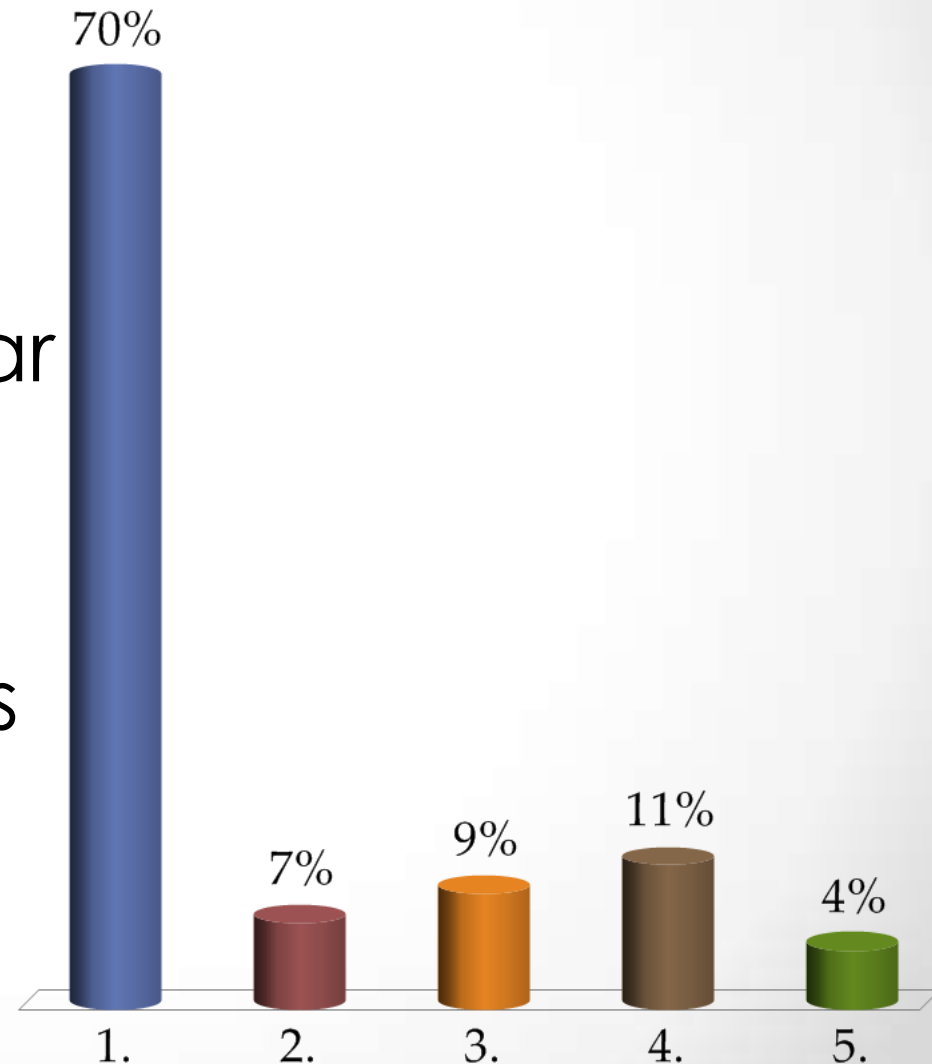


4. When questions come up, choose a number at the bottom



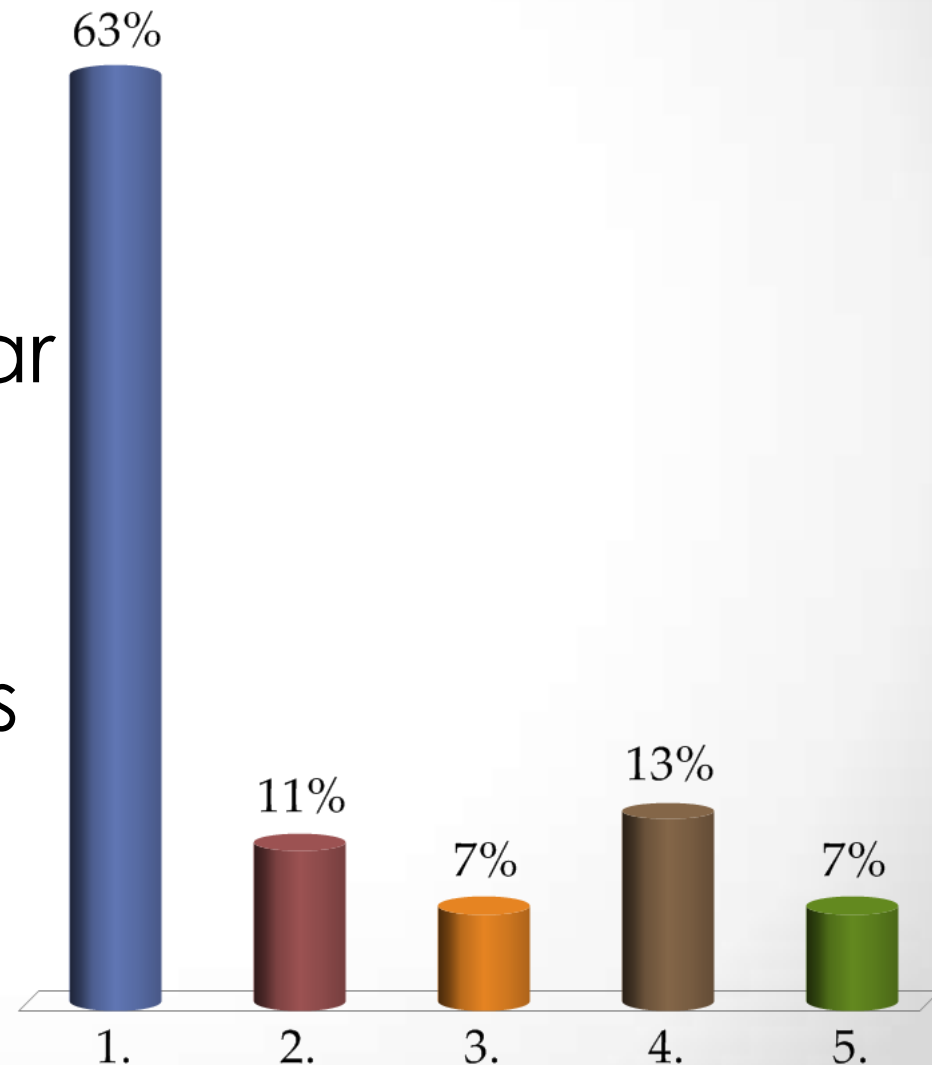
When was the last time you were in a classroom at Stevenson Elementary?

1. Within the last 6 months
2. Within the last year
3. Within the last 3 years
4. More than 3 years
5. Never



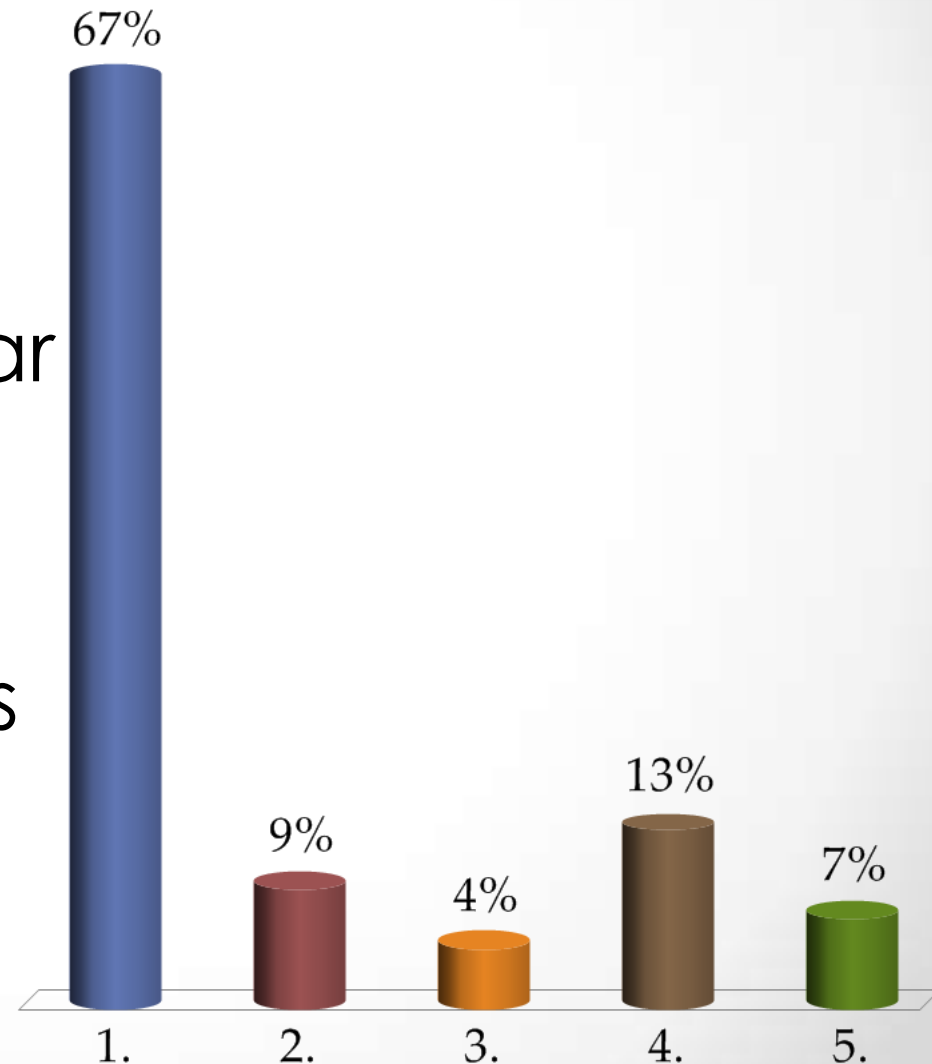
When was the last time you were in a classroom at Garfield Elementary?

1. Within the last 6 months
2. Within the last year
3. Within the last 3 years
4. More than 3 years
5. Never



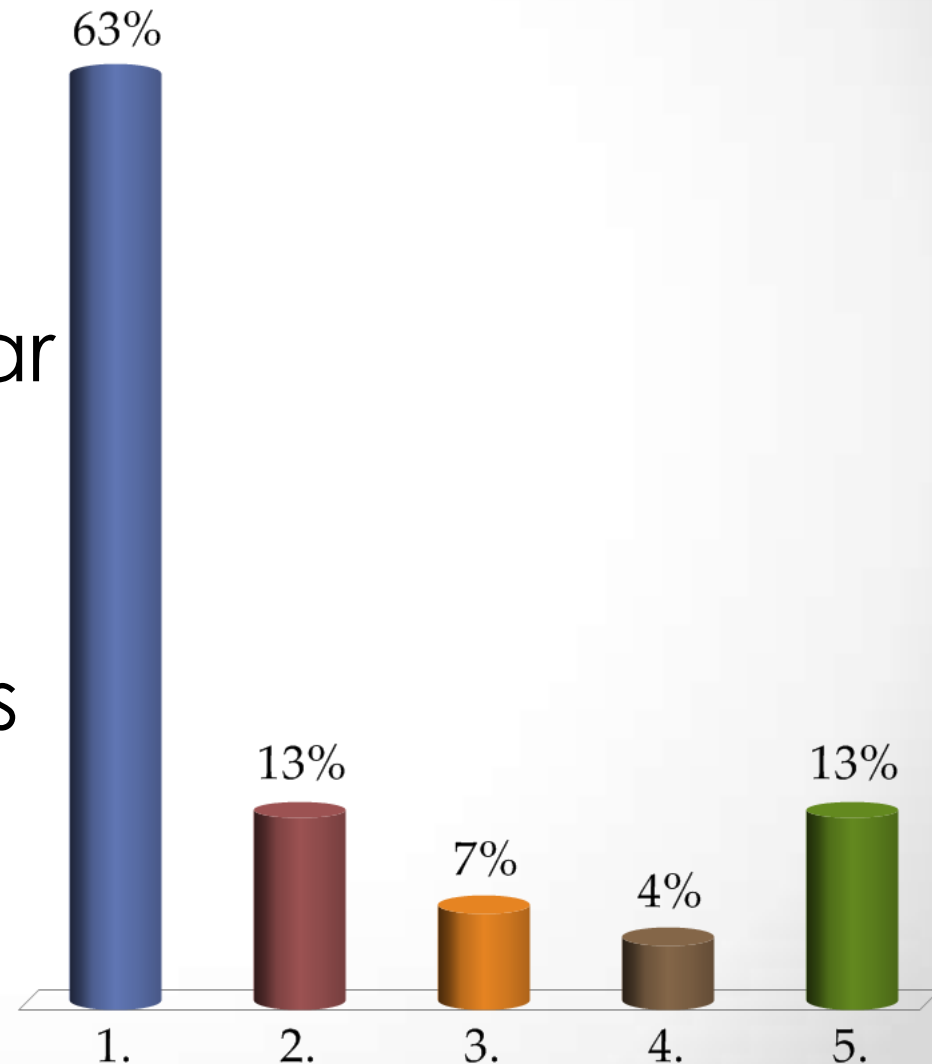
When was the last time you were in a classroom at Heath MS?

1. Within the last 6 months
2. Within the last year
3. Within the last 3 years
4. More than 3 years
5. Never



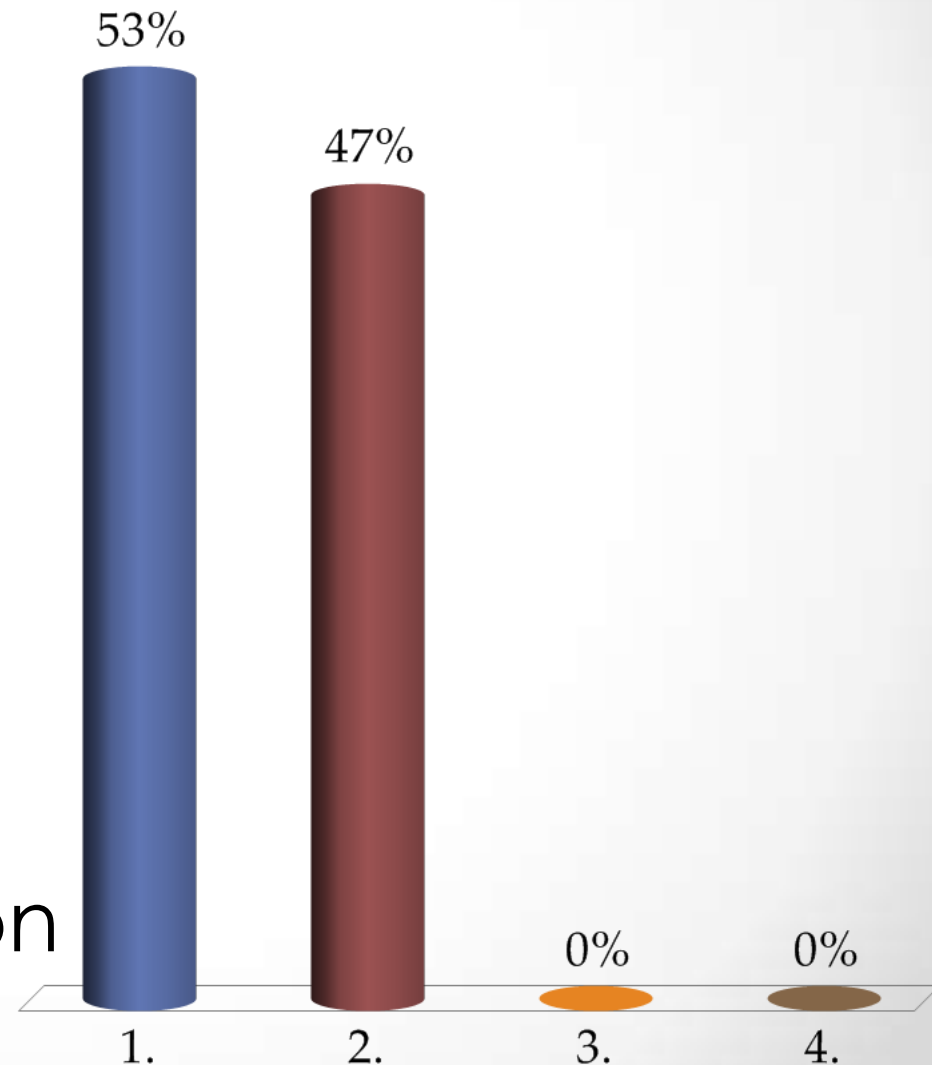
When was the last time you were in a classroom at Heath HS?

1. Within the last 6 months
2. Within the last year
3. Within the last 3 years
4. More than 3 years
5. Never



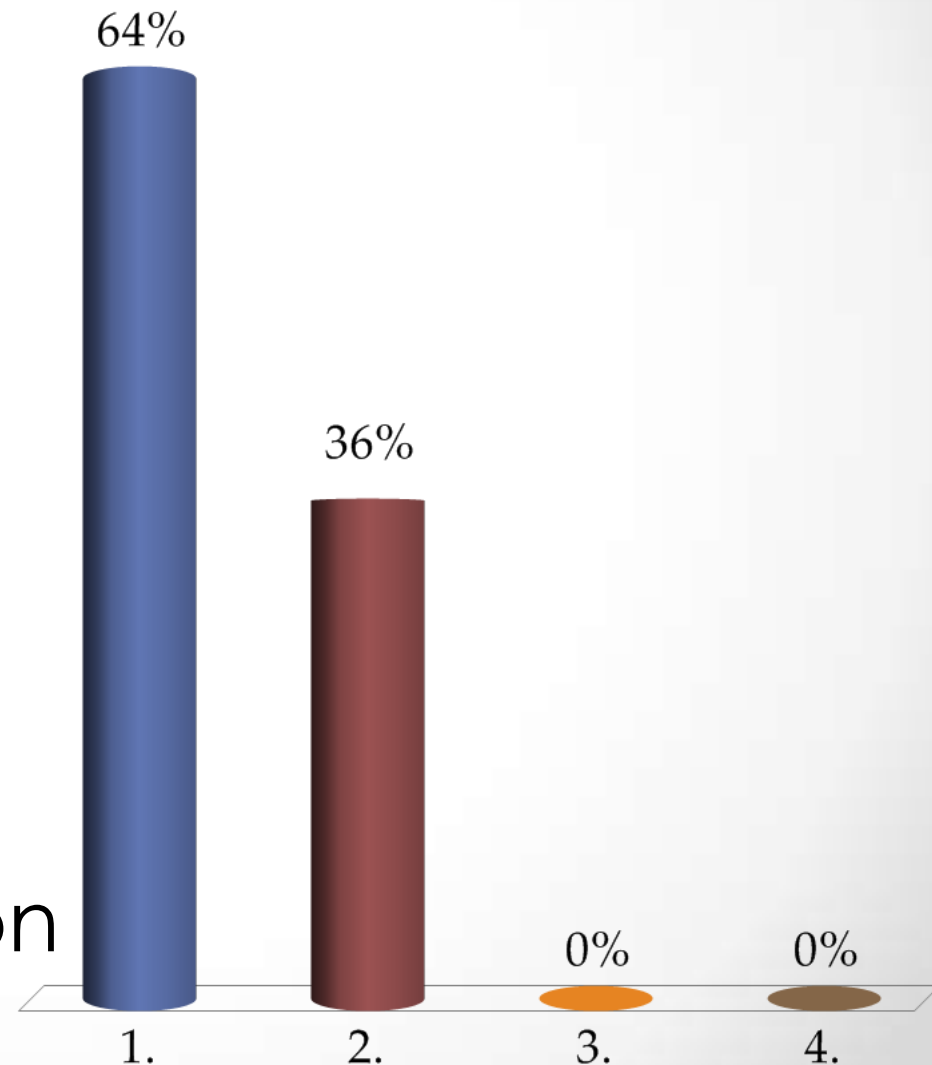
Based on what you know now, what is your perception of Stevenson's building systems and infrastructure?

1. Needs to be replaced
2. Needs Major renovations
3. Needs Minor renovations
4. Excellent condition



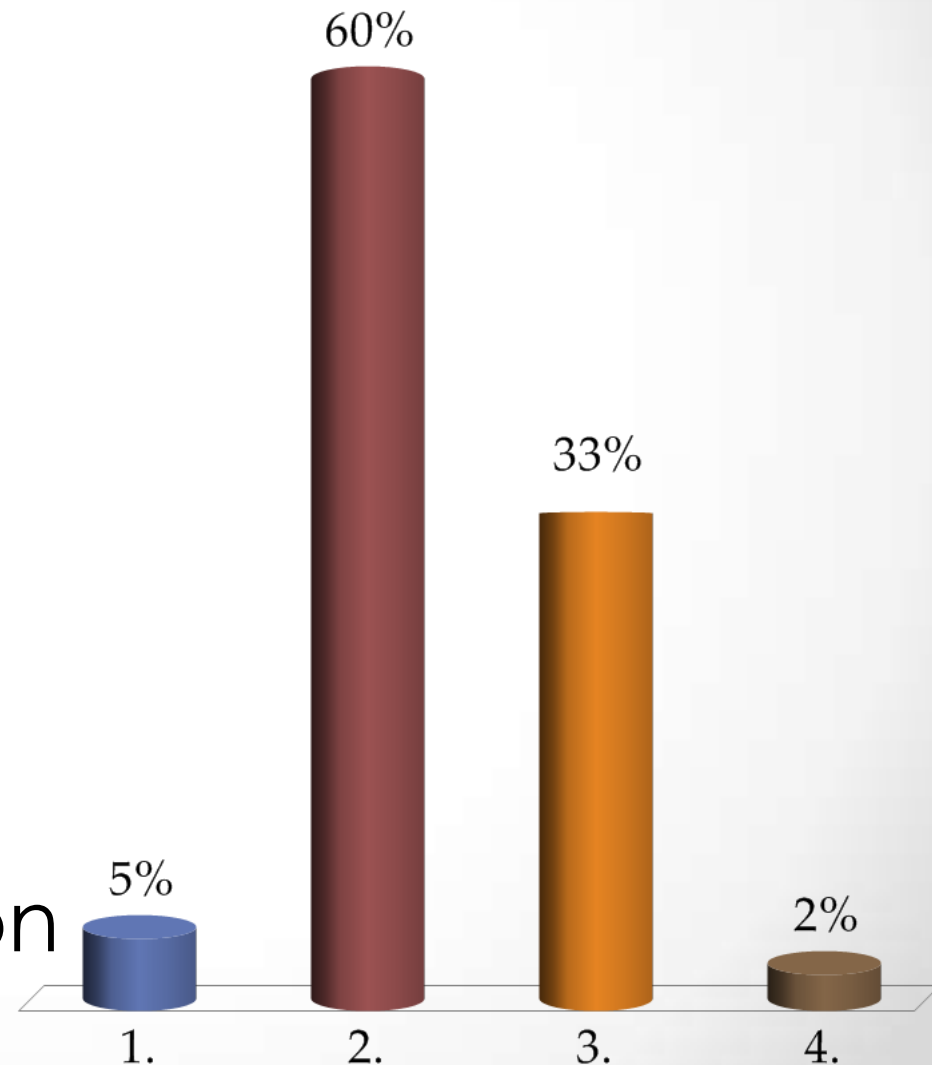
Based on what you know now, what is your perception of Garfield's building systems and infrastructure?

1. Needs to be replaced
2. Needs Major renovations
3. Needs Minor renovations
4. Excellent condition



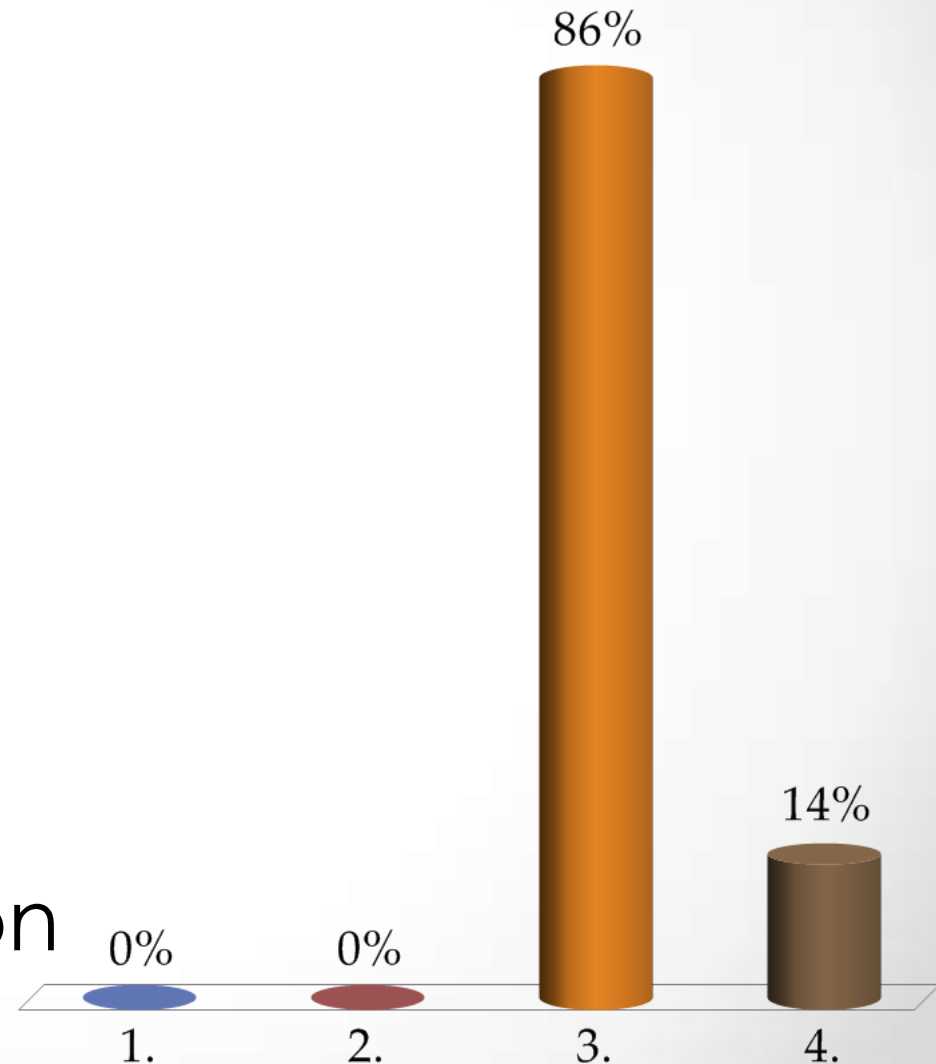
Based on what you know now, what is your perception of Heath MS building systems and infrastructure?

1. Needs to be replaced
2. Needs Major renovations
3. Needs Minor renovations
4. Excellent condition



Based on what you know now, what is your perception of Heath HS building systems and infrastructure?

1. Needs to be replaced
2. Needs Major renovations
3. Needs Minor renovations
4. Excellent condition



Who is the OFCC?



Formerly Known as:



Ohio Schools Facilities Commission



Why is an OFCC project under consideration at this time?



- Heath City Schools has an OFCC Equity Rank is #362 out of 610 school districts in the State of Ohio
- The Equity rank determines eligibility for the OFCC CFAP program (Classroom Facility Assistance Program)



What is this opportunity?

Classroom Facilities Assistance Program (CFAP)

The “Wait Your Turn” Program

- Districts are offered the chance to participate
“when their number comes up”
- OFCC is currently offering funding to those districts with numbers in the low 400's
- School district and OFCC agree on Master Plan and project cost
- **Heath is currently # 362 of 610 districts**
Note: This # changes every year in September



What is this opportunity?

Based on this ranking (362/610)
the State will pay 40% of the *Basic Master Plan Cost

State Funding	\$.40
----------------------	---------------

Local Funding	\$.60
----------------------	---------------

School Construction Dollars Required	\$ 1.00
---	----------------

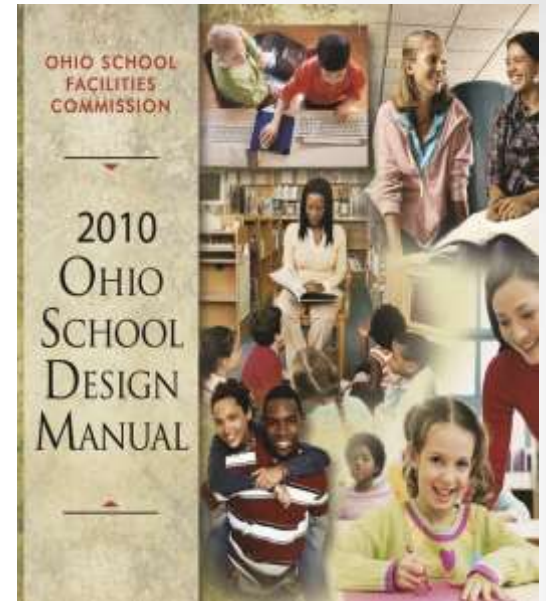


How Does the OFCC Work?

→ Process

Enrollment Projections
Building Assessments
Master Plan Options

→ OSDM (Ohio School Design Manual)



Enrollment

- OFCC completes an independent enrollment projection looking at the past 10 years of enrollment history
- The new projection looks 10 years into the future
- Current district enrollment is around 1,720



Assessments

OFCC Assessment Process

- **The Heath School Facilities were assessed by the OSFC in 2014 and are being updated to today's costs**
 - The OSFC assessment identifies how much it will cost to renovate the current buildings to “like new” condition
 - The cost to renovate is then compared to the cost to build that same size building new



OFCC Guidelines

The 2/3rds Rule

IF: the cost to renovate a building is greater than 2/3rds the cost to build the same size school new

THEN: OFCC recommends that the school should be rebuilt as a new building

In the 2014 OFCC assessments....

- Stevenson and Garfield Elementary Schools both exceeded the 2/3rds rule
- Heath HS and Heath MS were below the 2/3rds rule and would be renovated in an OFCC Master Plan



OFCC Guidelines

The 350 Student Rule

- * Any building that is part of an OFCC co-funded project must have a minimum projected enrollment of 350 students**



OSFC Facility Plan Budgeting

Number of students

X

Square feet allowed per student

X

Estimated dollars per square foot

= Budget available for the project



OFCC Will Fund:

- A district-wide Master Plan that includes all new or renovated facilities
- Focus on educational space
- Design professional and construction manager fees
- Technology infrastructure
- Loose furniture
- Security systems
- Building demolition and abatement

OFCC Will Not Fund:

- Land Purchase
- Athletic Fields
- Fixed-seat Auditoriums
- Costly Material Upgrades (roofs, floors, etc.)
- Utilities from off site
- Bus or Maintenance Buildings
- Computer Hardware/Software
- “Buttoning-up” partial buildings to remain

LFI's

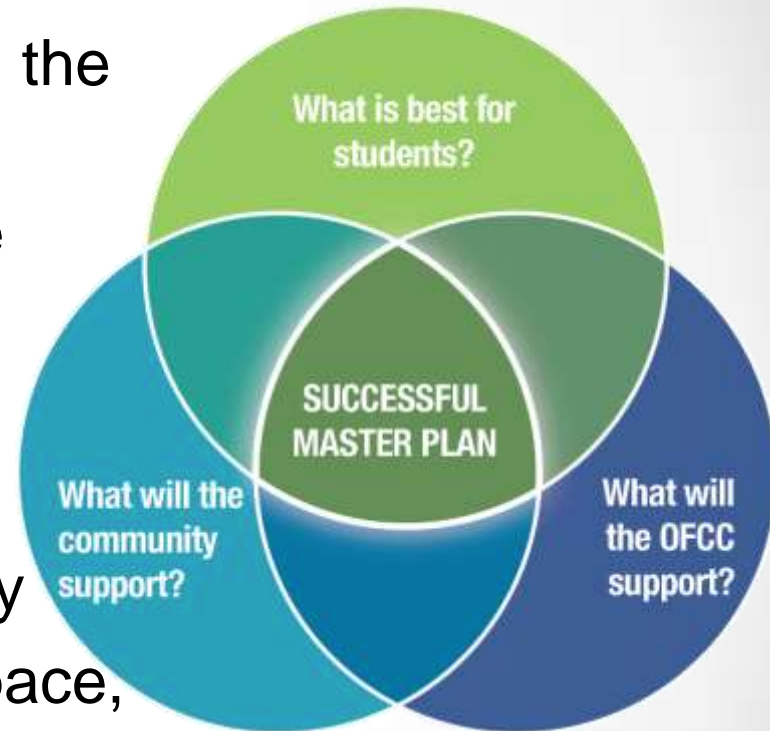
(Locally Funded Initiatives)



Master Planning

DEVELOP BROAD VIEW OF OPTIONS

- Identify the goals and brainstorm the possibilities
- Analyze possible locations & site constraints
- Right-sized program
- Consider potential for growth
- Maximize education and flexibility
- Identify costs, including swing space, inflation, etc.



OFCC Master Plan Process

■ District-wide Master Plan

- Every Building in the district is renovated or constructed new
- A district-wide master plan is created even if a district elects to do a segmented project

■ Segmented Master Plan

- A school district may elect to do a portion of the total master plan, addressing one or more buildings renovated or new



Potential OFCC Master Plan Options

Renovation Option

- Renovate Garfield Elementary
- Renovate Stevenson Elementary
- Renovate Heath MS
- Renovate Heath HS

A school district can choose to complete their Master Plan in segments



For more information, contact your school district.

Potential OFCC Master Plan Options

New + Renovation Option

- New Elementary to replace Stevenson and Garfield
- Renovate Heath MS
- Renovate Heath HS



+ more than 100 years of service

Potential OFCC Master Plan Options

Potential Segmented Plan

Segment 1

- Build a new Elementary building
or
- Renovate Stevenson and Garfield Elementary

Segment 2

- Renovate Heath MS
- Renovate Heath HS

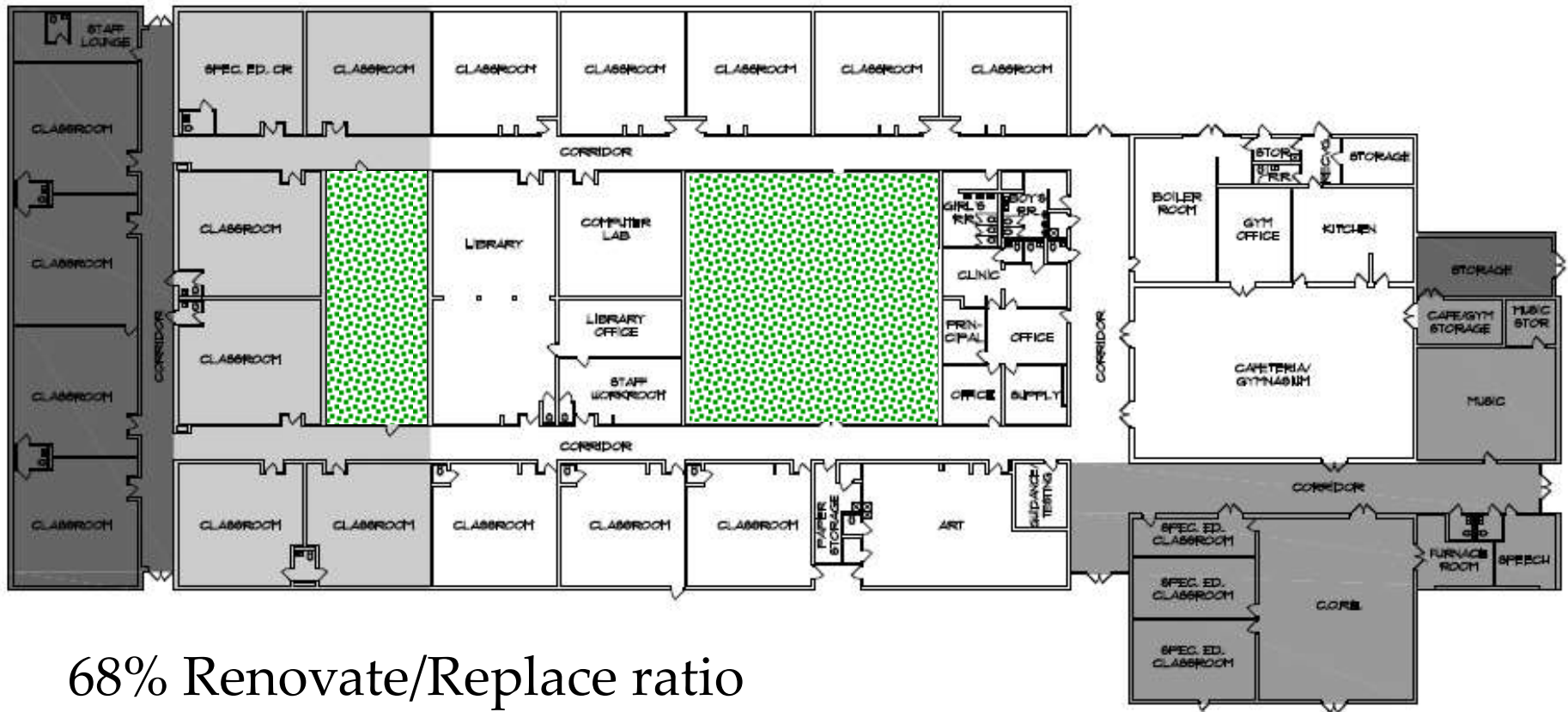


...and we're not just a school, we're a community.

GARFIELD ELEMENTARY – existing site



GARFIELD ELEMENTARY – current conditions



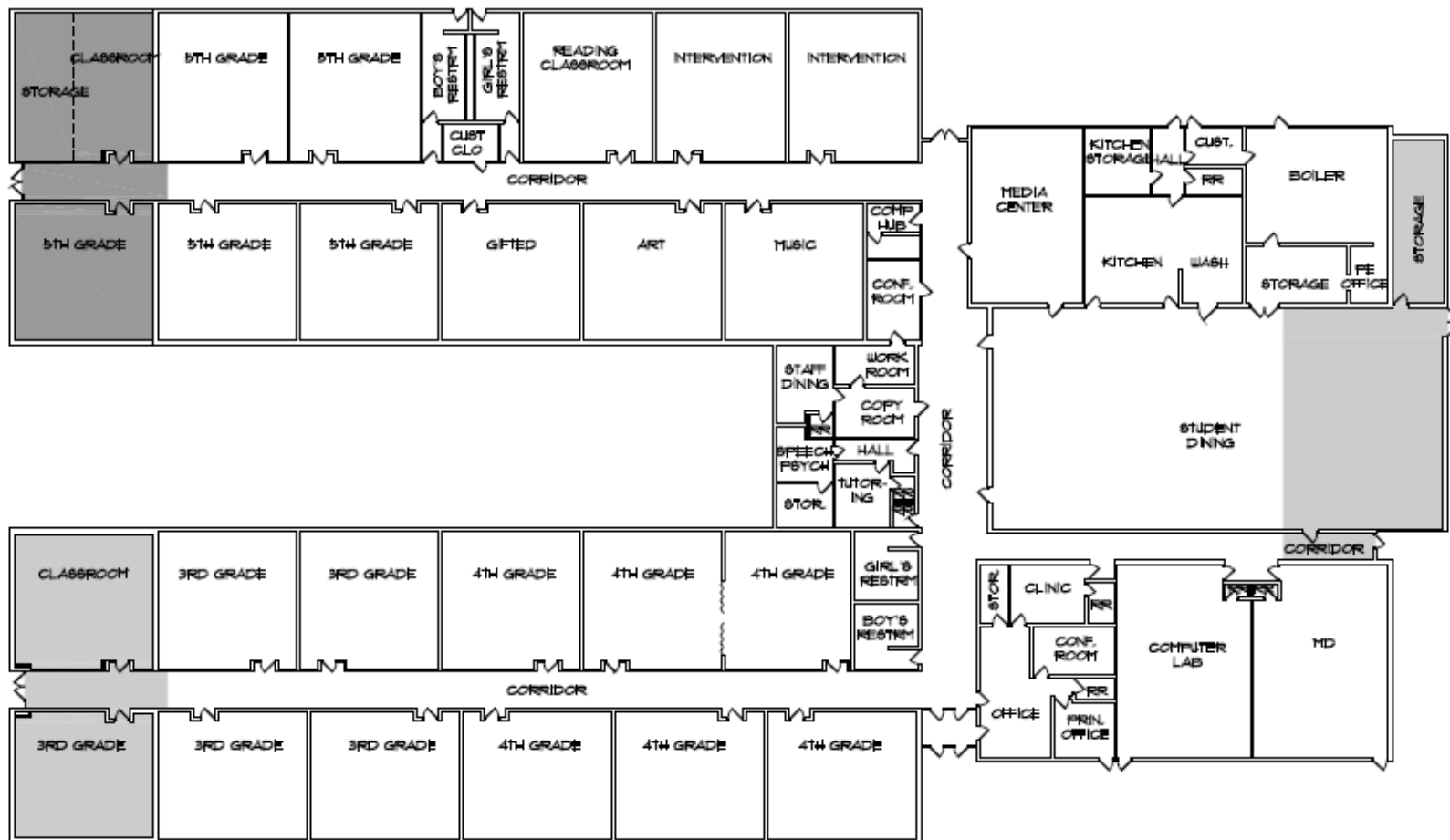
68% Renovate/Replace ratio

- Renovation cost exceeds 2/3rds rule
- Lacking separate gym
- Offices not at entrance

STEVENSON ELEMENTARY – existing site



STEVENSON ELEMENTARY – current conditions



67% Renovate/Replace ratio

- Renovation cost exceeds 2/3rds rule
- Lacking separate gym



Existing Site
33.43 acres

POTENTIAL
ACCESS

ACCESS

ACCESS

Cynthia St

Louise Ave

Carey Ln

Waureen Dr

Incaster Dr

© 2016 Google

Google earth

Space available for
construction

Contractor
staging and
parking

AREA FOR NEW
CONSTRUCTION

Contractor
staging and
parking

SCHOOL
"SAFE
ZONE"

© 2016 Google

Google earth

**What are they doing in
other school districts?**

















Finance Committee



Need volunteers to:

- Establish financial goals and objectives
- Learn about the funding options available
- Determine the best, most affordable funding option
- Make a funding recommendation to the Board



Finance Committee

Steps in the process:

- Review district's financial condition
- Review community's demographics
- Understand the community's current tax burden
- Learn about the different taxation options



Finance Committee

Timeline:



Stay Connected

Questions: tthomas@heath.k12.oh.us

Website:

<https://heathschoolplan.wixsite.com/workingtogether>



Next

Today

- August 29, 2018 : Kick-off and Overview

Future meeting dates:

- **September 12, 2018**
- October 10, 2018
- November 7, 2018
- November 28, 2018

Consensus by December 2018/January 2019

Targeting potential for a May 2019 bond issue

